

THINK PINK

Incorporating pink into grown-up designs

// BY YANIC SIMARD

WHEN YOU THINK ABOUT incorporating the colour pink into your interior, you probably associate it with being juvenile or ultra-feminine. This doesn't have to be the case. Pink actually is a very versatile colour that works well with almost any hue. It will add softness and sophistication, depending on what you pair it with and how you use it.

Following are four schemes that will help inspire you to design with pink in an 'adult' way:

1 Soft Pink + Dark Blue

Have you thought about using pink on the ceiling? Deep dark blue painted walls, like Benjamin Moore's CC-964 Blue Grotto, paired with 2085-60 Pink Petals as an accent colour for the ceiling looks really classy. This combination works particularly well for a bathroom. Reflective surfaces can help make a space more mature looking; introducing a copper element into this mixture would work beautifully.

2 Hot Pink + Jet Black

One strong colour deserves another. You don't want the room to look unbalanced, so to counteract the boldness of a hot pink, introduce another powerful colour such as black, which will even everything out. And the pink doesn't always need to be in the paint. Pink wallpaper, such as Trove's Nekkar in Pink (available at Industrial Storm in Toronto) will add beauty and elegance to any room setting. The black can also be in the upholstery, such as black leather club chairs. The finish that would work well here would be a rich looking type of natural wood, such as zebra wood.



3 Stark White + Deep Pink

Nothing is more clean, fresh and 'hotel-esque' than a room with white walls, white upholstery, white drapery... but adding a touch of pink can add some warmth to the scheme. Try using pink only in the artwork, like we did with this beautiful bedroom and stretched canvas art headboard. Finishes here might include mirror, like the mirrored side tables you see in the image.

4 Medium Pink+ Light Green

Would you ever upholster your dining chairs in solid pink fabric? Well, I would! Lavish looking crushed velvet paired with a nice wall treatment such as grasscloth with a subtle hint of green in it looks really striking. A touch of gold will take the look up to the next level – you could bring this in with the light fixtures, such as with Tom Dixon's gold 'Etch' Pendant Lights.

Pink actually is a very versatile colour that works well with almost any hue. It will add softness and sophistication, depending on what you pair it with and how you use it.



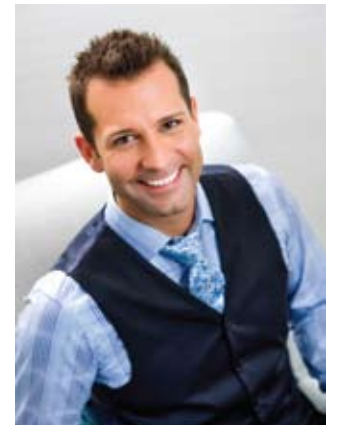
NATURAL WAYS

TO INCORPORATE PINK

- » Pebble Stone tile with chalky pink variation
- » Maple or bamboo flooring with subtle pink graining
- » Granite stone countertops with rose pink veins

COLOURS THAT DON'T LOOK GOOD WITH PINK

- » Mint Green
- » Orange
- » Purple



YANIC SIMARD

Yanic is the design editor of *New Condo Guide* and principal designer of Toronto Interior Design Group. Specializing in residential and commercial projects, Yanic often applies his signature high/low and old/new combination techniques in developing his unique designs. He has created designs for clients in Toronto, Montreal and Miami, and appears as a regular guest expert on Citytv's *CityLine*. Visit tidg.ca for more information.