

# HOMIE

ENTERTAINING | DECOR TRENDS | BEST BLUES | BEDDING BUYS



## Cart Deco

BY BRETT WALTHER

An ornate built-in screen offers guests a tantalizing glimpse of this gorgeous bar cart from the foyer. Loaded with glittering barware and beverages, the brass-plated entertaining essential sets a celebratory tone in an instant. *Libations bar cart, decanters, ice bucket, pitcher, vase, shaker, crateandbarrel.ca. Gold leaf tumblers, indigo.ca. Gold bowl, decorative spheres, wreath, pier1.ca. Screen, design, tidg.ca.*

PHOTOGRAPHY: STACEY BRANDFORD. STYLING: AURELIE BRYCE

# Party Central

WITH A FOCUS ON ELEGANT ENTERTAINING, DESIGNER YANIC SIMARD'S REFRESH OF THIS TRADITIONAL HOME SERVES UP SOME OF THE HOTTEST TRENDS FOR THE NEW YEAR.



**DIRECTIONAL LIGHTING** If you're ever at a loss for inspiration, Simard suggests looking up. "Lighting can dictate where you're going with a design," says the regular *CityLine* guest expert, noting that he often chooses a statement-making light fixture, like the front room's mid-century modern pendant, as a jumping-off point. "My first job was working in a lighting store in Montreal, and I think that really influenced my approach." *Pendant light, nuevoliving.com. Brass sconces, robertabbey.com. Desk chair, pinkandbrown.com. Table lamp, arteriorshome.com. Orb, homesense.ca. Jaime Hayon Silhouette rug, avenue-road.com. Throw blanket; toss cushions, pier1.ca. Grey cushions, banquette cushion, blinds, custom. Desk, vintage. Artwork, homeowners' own.*

DESIGN BY YANIC SIMARD WRITTEN BY BRETT WALTHER  
STYLING BY AURELIE BRYCE PHOTOGRAPHY BY STACEY BRANDFORD

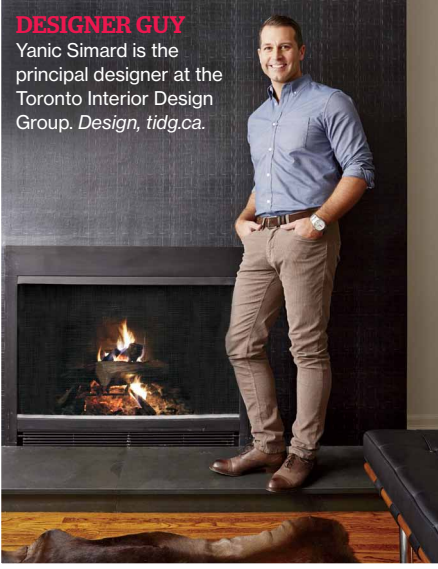


GROOMING BY LAURA SZUCS FOR M.A.C COSMETICS/TRESEMME HAIR CARE/PLUTINO GROUP

**GLOVE BOX** (Left) Tidier than a conventional "landing strip," a reproduction vintage card catalogue keeps clutter like winter wear and keys out of sight. *Chest of drawers, shelterfurniture.ca. Globe, homesense.ca. Gray 2121-10 paint (door), benjaminmoore.ca. Door mat, crateandbarrel.ca. Pendant light, worlds-away.com. Mirror, 1stdibs.com.*



**HOST HELPER** A well-stocked bar cart encourages guests to top up their own refreshments.



**DESIGNER GUY**  
Yanic Simard is the principal designer at the Toronto Interior Design Group. *Design, tidg.ca.*

**T**here's really no such thing as a "blank slate" in interior design. Take this charming semidetached Victorian in Toronto's Annex neighbourhood, for instance. Although the homeowners moved in with nothing but a few pieces of art, designer Yanic Simard found decor cues in how the couple dreamed of using their new space. "They have a big Italian family and entertaining is really important to them," says Simard. Important, sure, but also a significant challenge, considering that the main floor layout was better suited to a bowling alley than a chic soirée.

Simard's inspired solution was to carve three separate zones out of the long and narrow space: a front room that's home to a window seat and workstation, a cozy fireside conversation nook in the middle and a luxe TV lounge bringing up the rear. The three well-defined zones flow seamlessly from one to the other, thanks to Simard's thoughtful selection of furniture and accessories. "Each zone can interact with the others," he says. "The two chairs in front of the fireplace can be turned to face the desk and window bench, or towards the sofa opposite the TV. It's a very multifunctional arrangement." The resulting floor plan packs every square inch with potential for everything from posh cocktail parties to grand family get-togethers. ◻

The home's classic bones—including original moulding and trim—also provided a strong reference point. Though Simard was keen to keep these nods to the past, he didn't necessarily want to bring them into focus. "The trim was scuffed and uneven and really showing its age," he says. "I painted it the same colour as the wall so that it blends in nicely, but in a satin finish, which reads a few tones lighter than the flat finish used on the walls." The paint, Benjamin Moore's Classic Gray, is used throughout the home and is Simard's go-to neutral. "I call it my chameleon colour, because it works with so many different schemes," says Simard. "It's a nice, light taupe grey that will last forever."

Within that timeless neutral envelope, Simard assembled an eclectic mix of furnishings blending trend with tradition, and his own signature flourishes with the homeowners' tastes. "Too much brand-new furniture can make a house look like a showroom," he says. "I wanted the pieces to feel like they've always been in the space." *Classic Grey OC-23 paint (walls and trim), benjaminmoore.ca.*

## Design Details

**MIXED METALS** Forget slavishly matched metallics. In this home, Simard effortlessly mixes warm gold and cool chrome for a casually elegant feel. "You just have to get the proper balance," he says. "If you use mainly gold pieces, use a smaller amount of silver, and vice versa—never equal parts." *Gold mirrored cocktail tables, worlds-away.com. Mirror, arteriorshome.com. Gold bamboo side table, table lamp, greatlighting.com. Chevron cushions, custom. Small toss cushion, pier1.ca.*

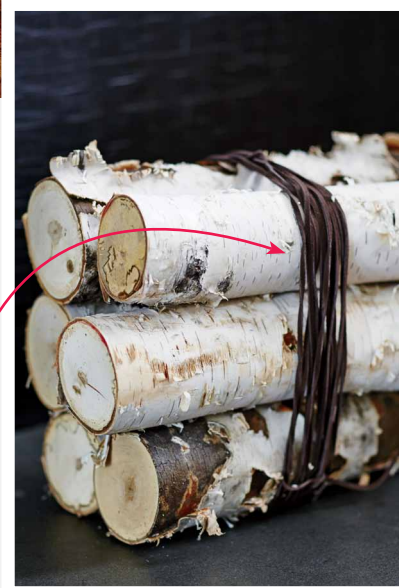
**SHADES OF GREY** The newest neutral on the block is the perfect balance of wallflower and drama queen. From the painted walls to the big-ticket investments like the sofa, window-seat cushions and draperies, greys were Simard's neutral of choice throughout the space. *Sofa, montauksofa.com.*



**THIS CHIC FIREPLACE SURROUND LOOKS LIKE LEATHER, BUT IT'S ACTUALLY HEAVY-DUTY TEXTURED VINYL!**



**LEFT:** *Mercury glass cup, napkins, white serveware, pier1.ca.*  
**CENTRE:** *Bowl, pier1.ca. Glasses, indigo.ca.*



**HEARTH-WARMING** Whether or not your fireplace is a wood-burning model, a stack of birch logs tied with leather twine is a decor essential.



**LET IT FLOW** Instead of using barriers to define zones in an open-concept space, lift Simard's subtle approach. This cowhide rug sets the fireside conversation area apart from the TV lounge, and a low Barcelona-style bench serves as seating for guests facing either side. *Cowhide rug, pampaleather.net. Armchairs, bench, pinkandbrown.com. Side table, absolutelyinc.com. Bowl, decorative spheres, throw blanket, pier1.ca. Candelabra, crateandbarrel.ca.*

**BARELY THERE DRAPERIES** Sheer window treatments are back with a bang. "Even if the window isn't that high, take sheers all the way up to the ceiling to create some drama," suggests Simard. *Sheer draperies, custom.*

Out-of-town visitors are treated to a stay in the glamorous guest bedroom, one of Simard's favourite spaces to design. "You can afford to think outside the box a little bit more, because your guests are only spending a few nights in the space and won't tire of bold, in-your-face elements like chevron-patterned drapes." *Drapes, chevron toss cushion, mirrored panels, custom. White toss cushion, tray, pier1.ca. Framed artwork, canvasgallery.ca. Rug, elte.com. Wall sculpture, arteriorshome.com.*

## Simard's Guest Room Essentials

### 1. AN UPHOLSTERED BED

in a neutral fabric lays the groundwork for a long-lasting decor scheme. The wingback design of the headboard is a handsome hotel-style detail. *Bed, gusmodern.com. Bedding, coverlet, westelm.ca.*

### 2. STORAGE

in the form of a mirrored armoire gives extended-stay guests the option of fully unpacking. The closed-door design is a thoughtful touch, particularly as Simard opted for a tulip-style side table and Louis Ghost chair in lieu of conventional cupboard-style nightstands. *Armoire, plataimport.ca. Side table, chair, eliteliving.ca.*

### 3. A SOOTHING PALETTE

promotes relaxation. "Yellow is a colour that most people don't actively dislike, which makes it an ideal choice for a guest bedroom," says Simard. Green and red, on the other hand, are two hues to avoid. "A lot of people are repulsed by green, and I rarely use red in any of my designs."

**4. A BENCH** at the foot of the bed is a great place for guests to set their suitcases. A row of three smaller stools would also do the trick. Just aim for an arrangement that's at least two-thirds the width of the footboard. *Bench, sunpan.com.*

**5. A DESK** provides a workstation for guests who might want to fire off a few emails, check weather forecasts, or catch up on Netflix before bed. It also means the room can serve double duty as a home office for those periods in-between guests. *Desk, sunpan.com. Desk chair, eliteliving.ca. Toss cushion, basket, pier1.ca. Desk lamp, robertabbey.com. Artwork, shelterfurniture.ca. ●*

**> GO ONLINE:** We tracked down five of the sexiest sawhorse desks on the market at [canadianliving.com/sawhorsedesk](http://canadianliving.com/sawhorsedesk).

## WINDOW SHOPPING KNIT PICKS

You know how cozy your fave chunky-weave sweater feels? Layer that warm, woolly sensibility throughout the house with these ultra-affordable cable-knit-inspired accessories.



### FOR THE TABLE

*Yedi Houseware Sweater Tea Collection porcelain teacups and saucers, \$55 (set of six), indigo.ca.*

### FOR THE MANTEL

*Sweater knit 4- x 5-inch pillar candle in Taupe, \$12, indigo.ca.*

### FOR THE BATHROOM

*Life at Home cable knit ceramic soap dispenser, \$5; tray, \$3; toothbrush holder, \$3; tumbler, \$3; realcanadiansuperstore.ca.*



### FOR THE HOLIDAYS

*Shatterproof ornaments, \$3 each, target.ca.*



## #TRENDING: BLUE HUES

It's elemental, dear Watson! Nature-inspired blues—pulled from land, sea and sky—are the common thread running through 2014's paint-colour trend forecasts. Here are some stylish hues to add to your home.

### 1. THE EARTHY BLUE

Loving the trend for all things lacquered? In lustrous full gloss, this muted navy—inspired by the curiously coloured mud on a British beach, of all things—would make for a striking focal wall.

### 2. THE WATERY BLUE

It may have been Pantone's Colour of the

Year way back in 2011, but turquoise has proven to be a trend with serious staying power. This vivid blue-green evokes the warm waters of the Caribbean, and can elevate lacklustre furniture into punchy statement pieces.

### 3. THE AIRY BLUE

Benjamin Moore's 2014 Colour of the Year is this powdery, barely-there pastel, which reinvents blue as a "new neutral." Painting a ceiling in this soft, livable hue would be like bringing the early morning summer sky indoors.

— Brett Walther

**1** *Stiffkey Blue 281, farrow-ball.com.*

**2** *Ocean Liner T14-1, behr.com.*

**3** *Breath of Fresh Air 806, benjaminmoore.ca.*



*Lynx faux-fur throw, \$375; all bedding, aulitfinelinens.com.*

## Five Minutes With JOANNA GOODMAN, BEDDING EXPERT

When Joanna Goodman's mother launched Au Lit Fine Linens in the early '80s, she was, as Goodman puts it, "bringing cotton sheets to a polyester world." Since then, Goodman's taken the reins of the Toronto-based luxury bedding business and has become one of the country's most respected authorities on bedroom chic.

**Why splurge on a down duvet?** "A down duvet is always going to be comfortable because it's lightweight, adapts to your body temperature, and—unlike polyester—it will keep you warm, but not sweaty."

**What's the biggest misconception about bedding?** "That a higher thread count makes a better sheet. That's not to say thread count isn't important, but two other factors matter more. First, look for sheets made from 100 percent Egyptian cotton, which is the very best cotton in the world. The other factor is where the sheets are woven. Italy is home to the world's premier weavers, and nothing compares to their tradition, equipment and training."

**What's your fave bedding trend for 2014?** "Faux fur. I'm calling it 'the new cashmere,' because it's actually outselling our cashmere throws for the first time ever. It's just a great way to make a seasonal style statement and add a bit of colour and texture."